


On July 4, 2006, the Smithsonian Institution's National Portrait Gallery reopens in the Donald W. Reynolds Center for American Art and Portraiture, exhibiting its treasure trove of stunning visual biographies. In every gallery of our renovated museum, you'll share moments with the extraordinary personalities who collectively reflect the heart and soul of America.

We invite you to take an active role in celebrating this major Smithsonian Institution milestone!

For a short time only, you can Adopt-A-Portrait from our exceptional collection. Choose a work that inspires you. Or find your favorite artist, a personal hero, or a portrait you've always loved.

With your generous gift, you can contribute to this historic family album and leave a long-lasting legacy as a patron of the Gallery.

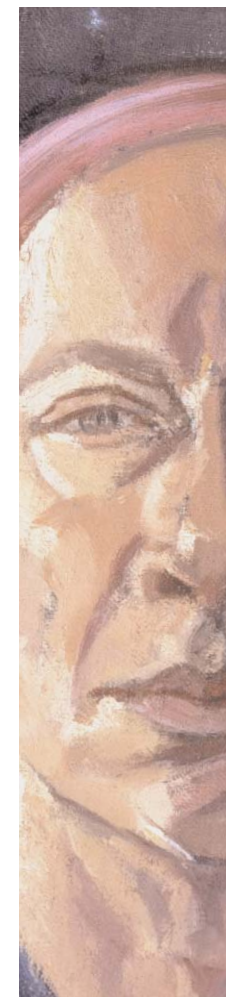
 **Smithsonian**
*Donald W. Reynolds Center for
 American Art and Portraiture*
National Portrait Gallery

Details from eight of the 300 portraits available for adoption:
 Front cover, from left to right: E. E. Cummings, Frederick Douglass, Franklin Delano Roosevelt, and Audrey Hepburn
 Back cover, from left to right: Lynn Fontanne, James Baldwin, Sequoyah, and Albert Einstein

National Portrait Gallery | Adopt-A-Portrait

Find inspiration among more than 300 portraits of famous individuals who helped to shape our nation, including:

- | | |
|--------------------|----------------------|
| Jonas Salk | Abraham Lincoln |
| Martha Graham | Rachel Carson |
| Walt Whitman | Orson Welles |
| Arthur Miller | Edward R. Murrow |
| Daniel Boone | Theodore Roosevelt |
| Amelia Earhart | Lucille Ball |
| Malcom X | Ernest Hemingway |
| Pocahontas | J. P. Morgan |
| Alfred Hitchcock | Booker T. Washington |
| Casey Stengel | Edith Wharton |
| Mark Twain | Frederick Douglass |
| Sojourner Truth | Aaron Copland |
| Stonewall Jackson | George Patton Jr. |
| Bob Dylan | William Faulkner |
| George Washington | Sequoyah |
| Dolley Madison | Edward Hopper |
| Samuel F. B. Morse | Robert E. Lee |
| Babe Ruth | Eleanor Roosevelt |
| John Steinbeck | Billy Graham |
| Norman Rockwell | Charles Lindbergh |
| Josephine Baker | Miles Davis |



Who Inspires You?

Albert Einstein?

Jackie Robinson?

Susan B. Anthony?

Benefits for Donors

ADOPT-A-PORTRAIT

This portrait adopted by
Daniel and Rebecca Okrent.

When on display, each adopted portrait will have a label recognizing your sponsorship. You may designate your gift in honor of someone else or a special event. Sponsors will be recognized in selected National Portrait Gallery and Smithsonian publications. Recognition will last for five years.

Adopt-A-Portrait patrons will be invited to an exclusive series of events scheduled around the National Portrait Gallery's July 4, 2006, reopening celebration, including previews, receptions, and private tours.

Donors will be recognized in the 2006 Smithsonian Annual Report and will also be enrolled in the 2006 NPG Director's Circle, receiving all benefits provided to this group.

Your tax-deductible \$10,000 donation (payable over five years) to adopt one of the 300 plus portraits listed on the enclosed insert will help fund the Gallery's programs, reinstallation, and general conservation of works in our collection.

To preview adoptable artworks, and for further explanation about the Adopt-A-Portrait program, visit www.npg.si.edu or call (202) 357-0125.

Adopt-A-Portrait Guidelines

The selection of adoptable artworks is at the sole discretion of the National Portrait Gallery.

Adoptions are based on a \$10,000 donation toward a single artwork, with no restriction as to the number of portraits a patron may adopt. Adoptions are limited to a single gift for any single portrait. Hence, multiple gifts from unrelated donors will not be pooled toward one portrait.

Donors are invited to participate with the understanding that a portrait adoption does not constitute a retrospective purchase/acquisition of the particular artwork, and does not convey any borrowing rights or ownership interests of any kind in the artwork. Recognition will expire after five years, and is therefore temporary.

Selections are available on a first come, first served basis. Portraits are available for previewing on the National Portrait Gallery's website at www.npg.si.edu from November 30, 2005, until June 1, 2006. You may also call our Development Office at (202) 357-0125 to review selected works if you do not have Internet access.

Adoption choices cannot be guaranteed. We will use our best efforts to ensure that a donor's first choice is designated in his or her name. However, we request that donors designate alternate portraits as a backup in the event of a conflict. If requests do overlap, the conflict will be handled at the sole discretion of the National Portrait Gallery.

